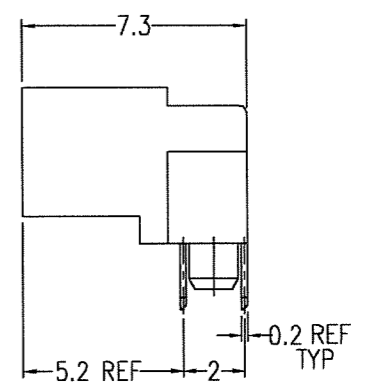
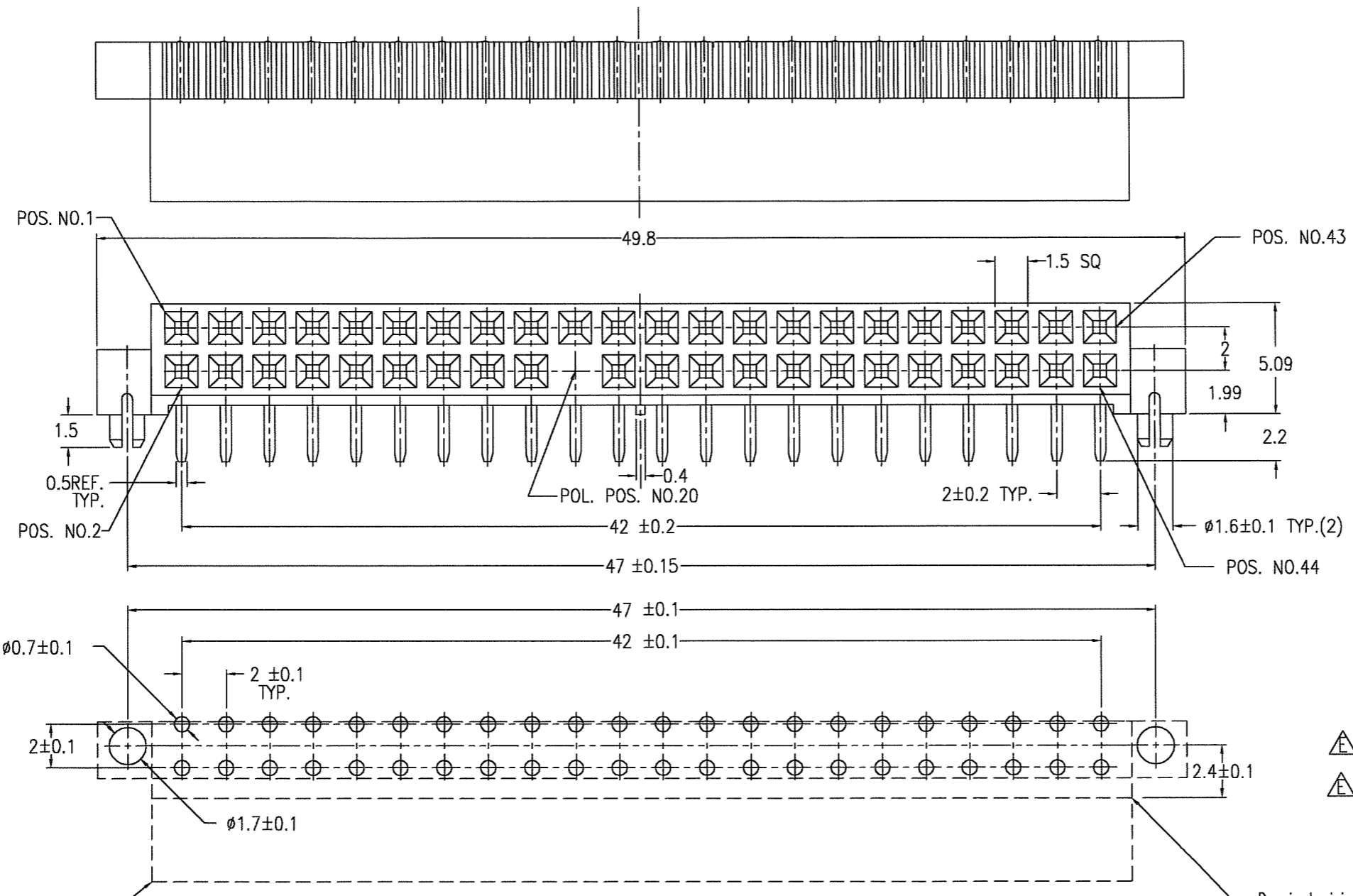


PRODUCT NO.	POS.	POLARIZED POS.
94882-001	2X22	NO.20
△ 94882-001LF	2X22	NO.20



- ① MATL : HOUSING PPS UL94V-0
COLOR BROWN
TERMINAL PHOSPHOR BRONZE
- ② PLATING: CONTACT AREA Au 0.2 μm MIN.
SOLDER TAIL AREA SnPb 1.5 μm MIN.
- 3 CUT SURFACE IS UNPLATED
- 4 GENERAL TOLERANCE : ±0.25
- 5 APPROPRIATE HDR SHOULD BE POLARIZED
AT POS. NO.20.
- △ ⑥ 94882-001LF PLATING CONTACT AREA Au 0.2 μm MIN
SOLDER TAIL AREA Au Flash
- △ 7 THIS PRODUCT MEETS EUROPEAN UNION DIRECTIVES
AND OTHER COUNTRY REGULATIONS
AS DESCRIBED IN GS-22-008.

mat'l. code	surface	tolerance	projection	product family	CODE
---	ISO 1302	ISO 406	ISO 1101	5MUF - MINITEK TERMINALS	JP
ltr	description	ecn no	dr	date	title
E	REVISED	J06-0061	R.S	2/21/06	MINITEK STP HCC FOR MCC
F	REVISED	J06-0352	R.S	8/30/06	
					scale 4:1
					sheet 1 of 2 size
					94882 A2
					type Product Customer Drawing
sheet	revision	F			Rev.
index	sheet	1			F

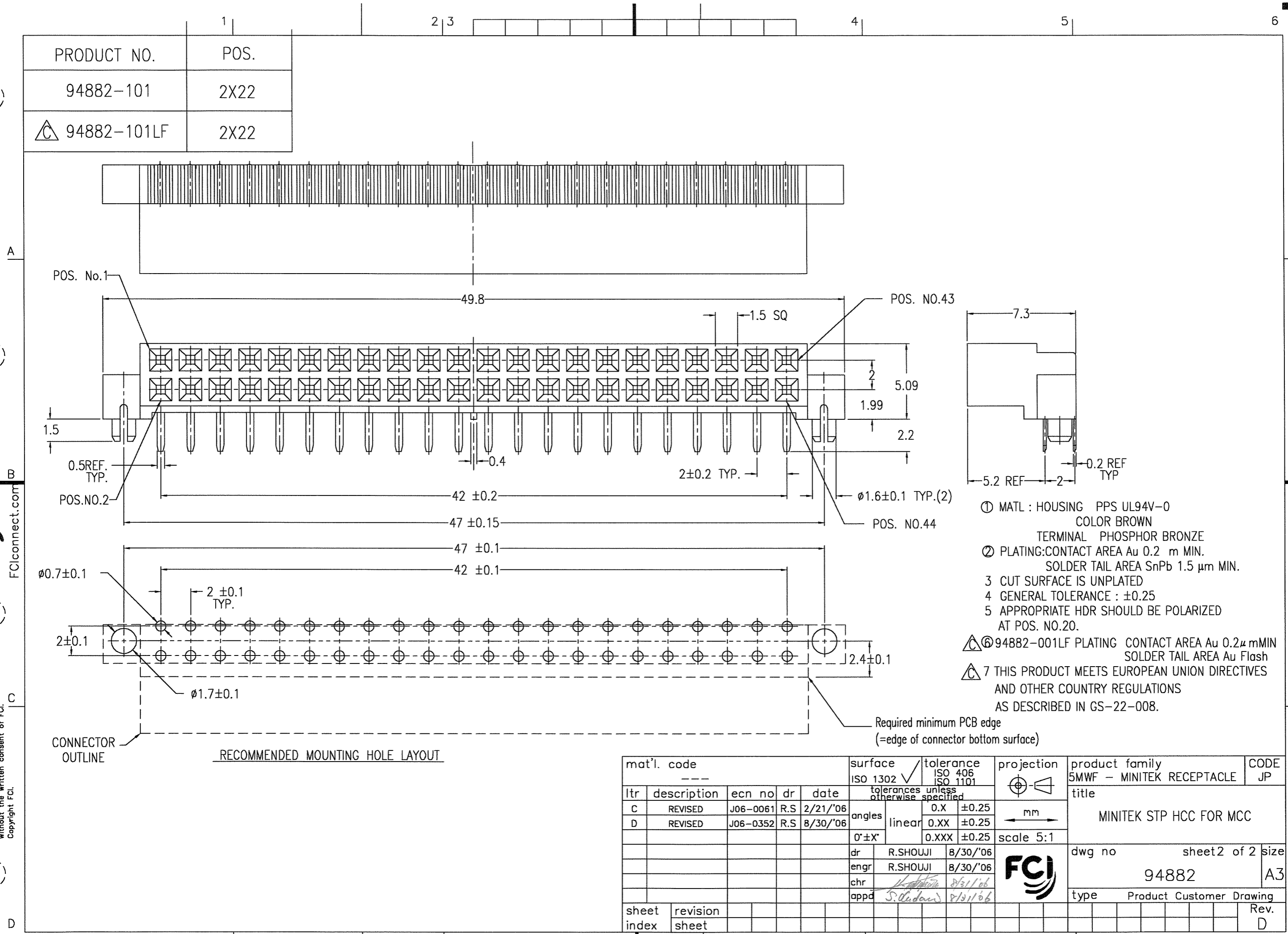
FCI CONFIDENTIAL

FCI

This document is the property of and embodies CONFIDENTIAL and PROPRIETARY information of FCI. No part of the information shown on this document may be used in any way or disclosed to others without the written consent of FCI. Copyright FCI.

This document is the property of and embodies CONFIDENTIAL and PROPRIETARY information of FCI. No part of the information shown on this document may be used in any way or disclosed to others without the written consent of FCI. Copyright FCI.

FCI CONFIDENTIAL



- ① MATL : HOUSING PPS UL94V-0
COLOR BROWN
- ② PLATING: CONTACT AREA Au 0.2 μm MIN.
SOLDER TAIL AREA SnPb 1.5 μm MIN.
- 3 CUT SURFACE IS UNPLATED
- 4 GENERAL TOLERANCE : ±0.25
- 5 APPROPRIATE HDR SHOULD BE POLARIZED
AT POS. NO.20.
- Ⓜ ⑥ 94882-001LF PLATING CONTACT AREA Au 0.2 μm MIN
SOLDER TAIL AREA Au Flash
- Ⓜ 7 THIS PRODUCT MEETS EUROPEAN UNION DIRECTIVES
AND OTHER COUNTRY REGULATIONS
AS DESCRIBED IN GS-22-008.

mat'l. code ---				surface ISO 1302 ✓	tolerance ISO 406 ISO 1101	projection 	product family 5MWF - MINITEK RECEPTACLE	CODE JP
ltr	description	ecn no	dr	date	tolerances unless otherwise specified		title MINITEK STP HCC FOR MCC	scale 5:1
C	REVISED	J06-0061	R.S	2/21/'06	angles	0.X ±0.25		
D	REVISED	J06-0352	R.S	8/30/'06	linear	0.XX ±0.25	dwg no 94882	sheet 2 of 2 A3
					0'±X'	0.XXX ±0.25		
					dr	R.SHOUJI 8/30/'06	type Product Customer Drawing	Rev. D
					enr	R.SHOUJI 8/30/'06		
					chr	<i>[Signature]</i> 8/31/06		
					app	<i>[Signature]</i> 8/31/06		
sheet index	revision sheet							